

TECHNOLOGICAL CORE, MANY ADVANTAGES!

Many advantages in few centimeters.
The **MTM** range includes great features, all standard and on all **audio** and **video** models.

HIGHLY INTEGRATABLE

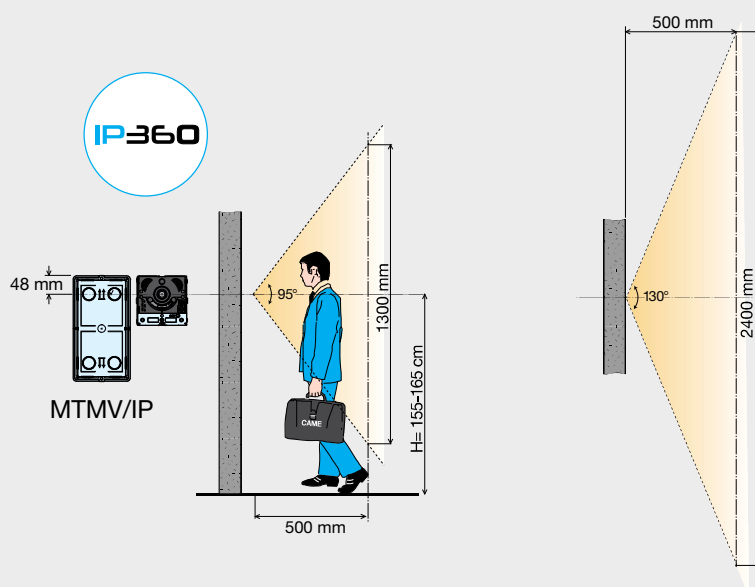
Besides the normal **discharge output** for the electric lock, there is also a **relay output** featured on the entry panel's terminal board. This can connect to any operator. Also, there are **two programmable**, input-or-output function **terminal boards**. The former is for any additional call buttons or feedback on the state of the door. The latter is for triggering additional auxiliary relays or to notify the state of the door to other systems.



WIDE-ANGLE VISION

The MTM video modules, enhanced by the new wide-eye lens, let you see a very extensive area: **100° horizontal** and **82° vertical** openings of the video camera lens.

The **IP360** version has been further upgraded to a **130° horizontal** and **95° vertical** angles, with no image distortion whatsoever.



MTM VR VERSION

FRAME
AND FRONT-
PIECES WHOLLY
MADE OF
ZAMAK, ALL IN
JUST 16 mm

HIGHLY
WEATHER-
AGENT PROOF

MTM VANDAL- RESISTANT VERSION FOR GREATER SECURITY AND PEACE-OF-MIND.

All of the functions on the standard version will be available in a new body: **same mechanics and functional modules**, same accessories, but with a vandal-resistant skin.

New design, **with Zamak trimmings**, all VR items can resist up to **IK09** level shocks. This means the MTM series is the most complete range of modular entry panels on the market.

WATER AND SHOCK
PROTECTED

SAME AUDIO AND VIDEO
QUALITY AS THE MTM
VERSION

CRUSH-PROOF
BUTTONS WITH TWO-COLOR
BACKLIGHTING

SECURITY SCREWS

MOUNTING AND INSTALLING

Fitting the **MTM** is **quick** and **easy**.

A few steps is all it takes to assemble and fasten the plaque to the wall. Below you can see the steps needed to fit a two-module video entry panel.

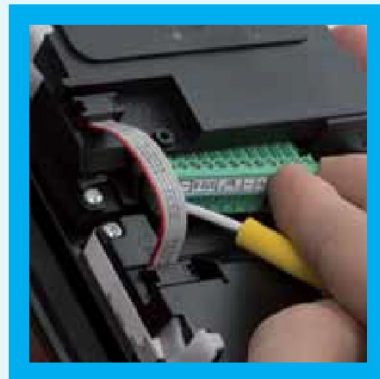
- ❶ Wire the terminal board to the wall.
- ❷ Fasten the video module to the frame.
- ❸ Fasten and connect the second module by using the flat cable.
- ❹ Connect the terminal board to the main module.
- ❺ Fasten the frame to the recess-mounting box.
- ❻ Program and adjust settings on entry panel.
- ❼ Add the front pieces.
- ❽ Close with the frame.



JUST ONE TERMINAL BOARD FOR CONNECTING TO THE SYSTEM

The system connects to the entry panel via a single terminal board that is connected to the audio or audio/video module. From here, all of the other modules are connected via a single flat anti-inverting cable.

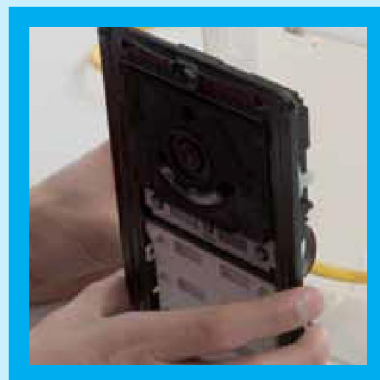
It's difficult to get it wrong.



BENCH-ASSEMBLING THE ENTRY PANEL

The plaque is bench-assembled beforehand.

The entire module-programming-and-settings phase can be done from the installed entry panel before fitting the front pieces.



MANUAL SETTINGS AND ADJUSTMENTS

Simpler systems can be programmed via the buttons on the audio or audio/video module.

You can, in fact:

- program calls;
- adjust the field of view;
- choose between blue or white backlighting;
- adjust button brightness.



PROGRAMMING VIA USB

Whereas complex systems can use a PC to program the entry panel. By fitting a USB drive into the audio or audio/video module, you can activate the advanced functions or program more complex systems. All programming is done via PCS/XIP software.



CAME CONNECT WE CONNECT. YOU CONTROL.

Today smartphones and tablets have become part of our lives.

These devices have become irreplaceable aids in our lives; also thanks to the Apps that provide control over new functions, every day. Touching, seeing, hearing have no more limits. It's all within reach.

To meet these needs **CAME** has developed a series of custom Apps for controlling all of our products.

Enter the **CAME CONNECT** world.



Do you want to see who is ringing the doorbell, even when you're not home?

Answering, checking the video
cams' live images and opening the
front door, from your smartphone,
is now possible.



Legend

- = UTP CAT 5
- ... = Internet connection
- - - = Wi-Fi

The diagram shows a house with a Futura IP camera mounted on the wall. The camera is connected to a router inside the house via Wi-Fi. The router is connected to the Internet via a dotted line. A tablet is also connected to the camera via Wi-Fi. The Internet connection leads to the CAME CCONNECT cloud system, which is represented by a globe icon.

BEST SELLING VR COMPOSITIONS

